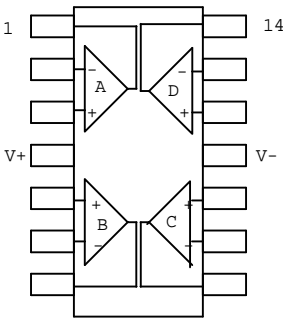
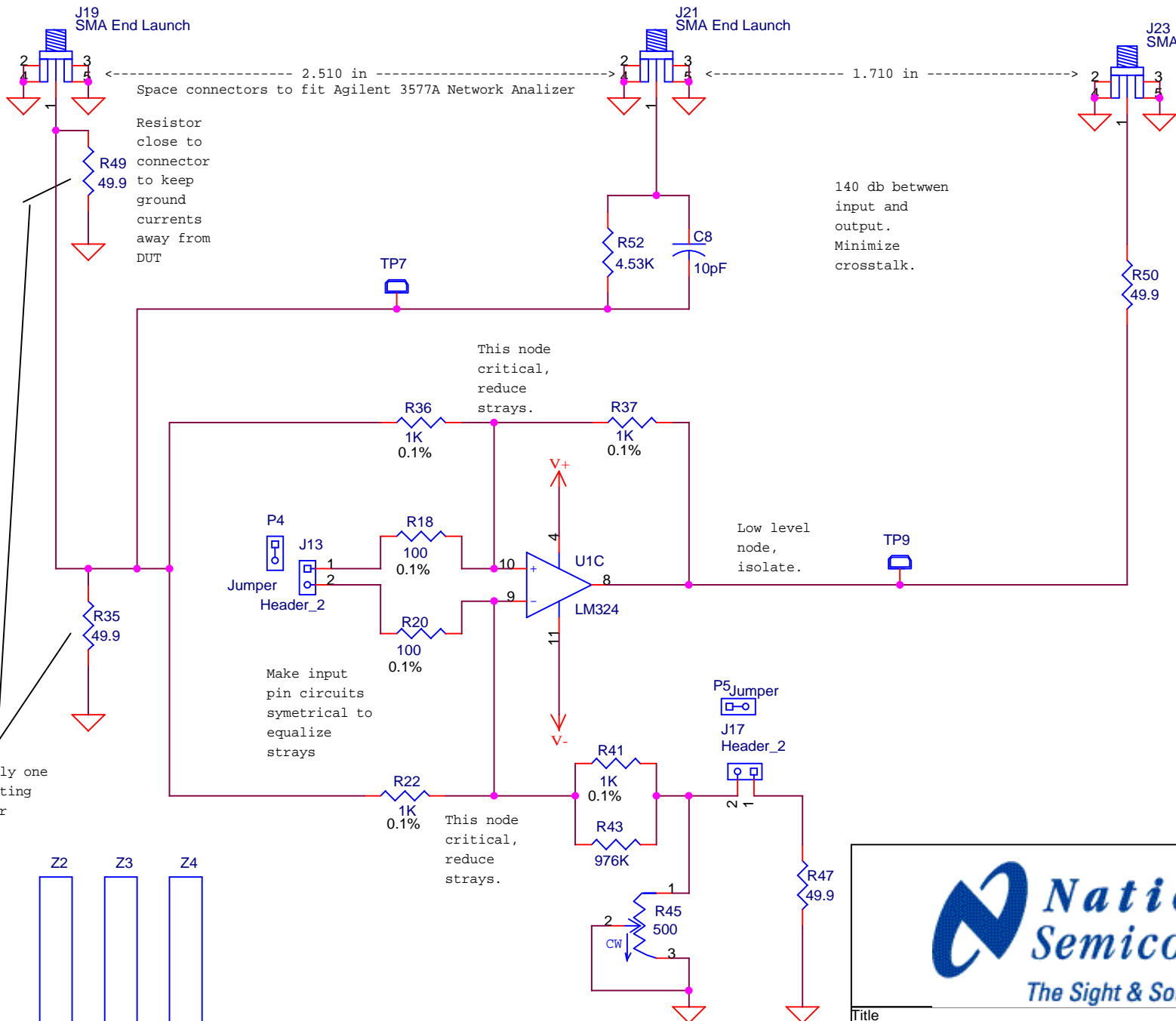
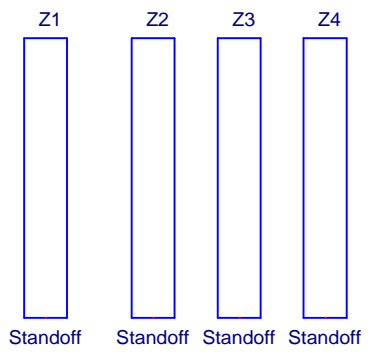



Title		
Quad DIP CMRR Board		
Size	Document Number	Rev
A	Quad DIP CMRR Board.dsn	A.1
Date:	Tuesday, October 22, 2002	Sheet 1 of 4

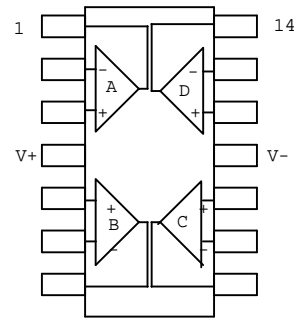
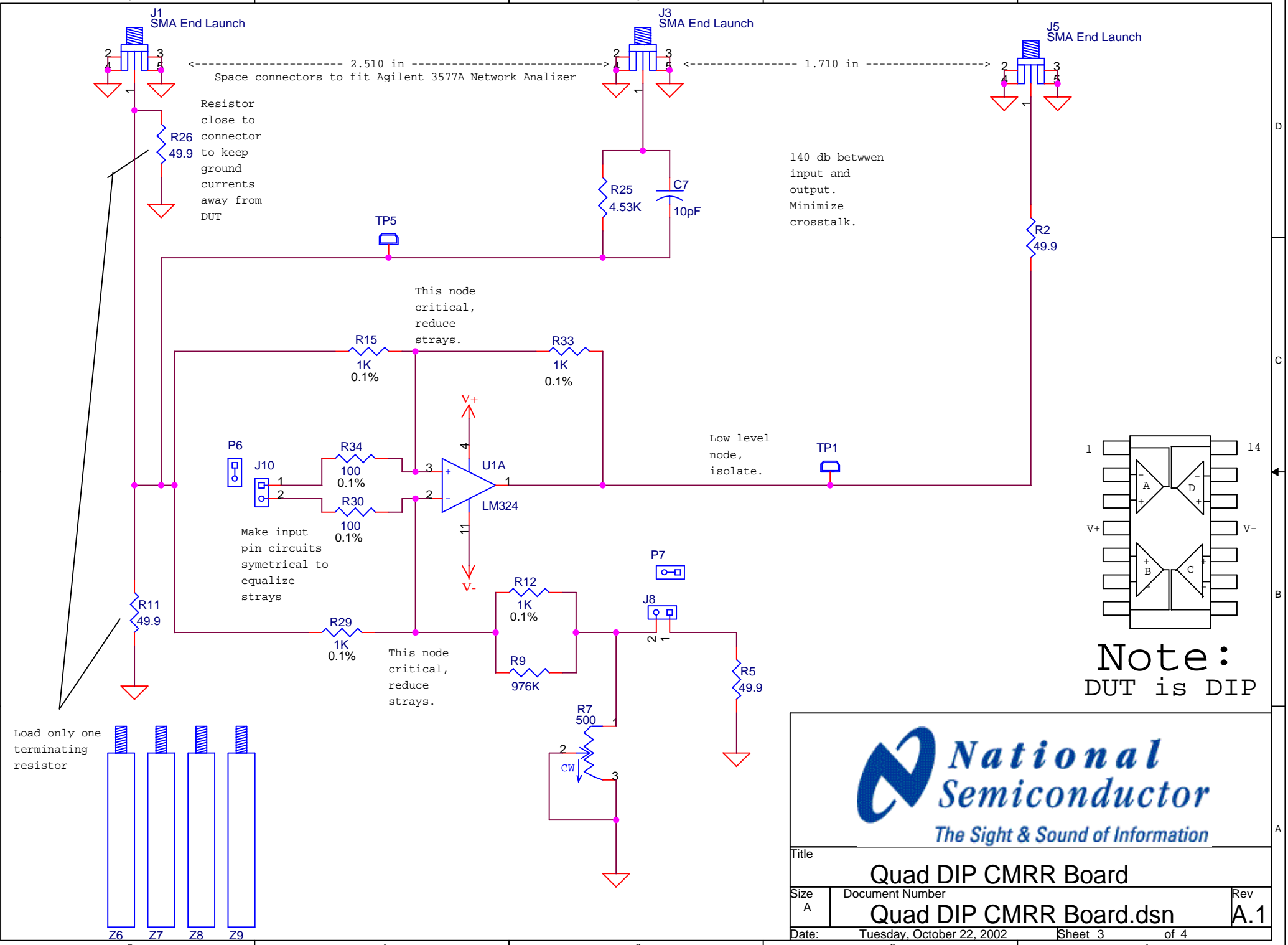


**Note:**  
DUT is DIP




**National Semiconductor**  
*The Sight & Sound of Information*

Title		
<b>Quad DIP Gain Phase Board</b>		
Size	Document Number	Rev
A	<b>Quad Gain Phase Board.dsn</b>	<b>A.1</b>
Date:	Tuesday, October 22, 2002	Sheet 2 of 4



**Note:**  
DUT is DIP



Title		
Quad DIP CMRR Board		
Size	Document Number	Rev
A	Quad DIP CMRR Board.dsn	A.1
Date:	Tuesday, October 22, 2002	Sheet 3 of 4

J18  
SMA End Launch

J20  
SMA End Launch

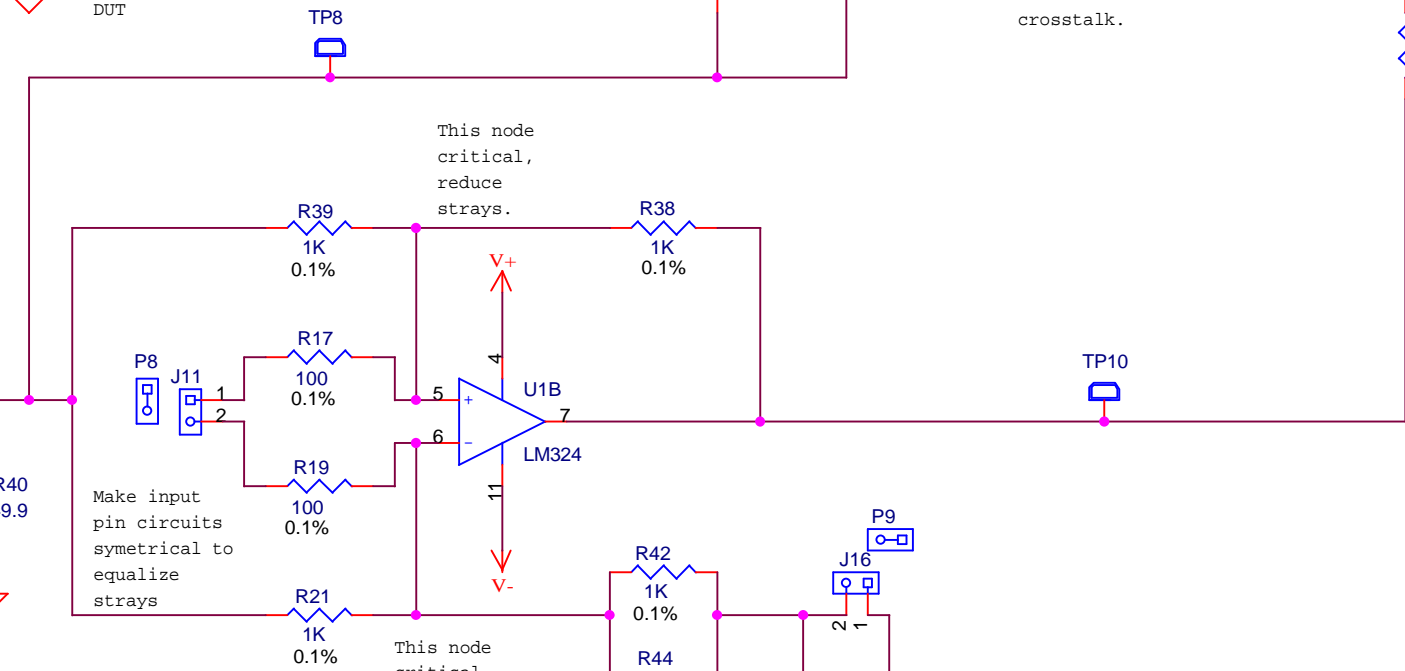
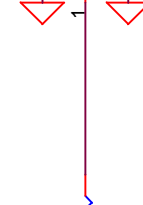
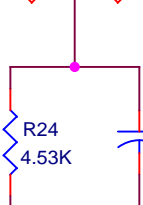
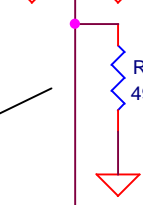
J22  
SMA End Launch

Space connectors to fit Agilent 3577A Network Analyzer

1.710 in

Resistor close to connector to keep ground currents away from DUT

140 db between input and output. Minimize crosstalk.



This node critical, reduce strays.

This node critical, reduce strays.

Make input pin circuits symmetrical to equalize strays

Load only one terminating resistor

Note:  
DUT is DIP



Title		
Quad DIP CMRR Board		
Size	Document Number	Rev
A	Quad DIP CMRR Board.dsn	A.1
Date:	Tuesday, October 22, 2002	Sheet 4 of 4